

# Modulate™ Straight 1820

MOD-S-1820



**Modulate™** consists of a set of frames made from aluminium tubes (Ø30 mm) covered with a printed tension fabric graphic. These frames can be connected together using powerful magnets inside each frame. Modulate range is available in 11 different sized formats.

- Thanks to the exclusive **MagLink** magnetic system built into the structure, you can connect the frames by simply touching them together.
- With the **Twist & Lock** system, simply position the foot under the structure, turn it and it's locked!
- The graphics are very easy to maintain thanks to the crease-resistant and machine washable textile cover. Stretch fabric with zip system.



360° MagLink connector in each pole. 4 magnets per structure



Optional 400 mm extension to change the height of the structure



Self-locking system with bungee poles and push-buttons



Simple assembly with numbered frame parts



Central reinforcement tube (Ø 18 mm)



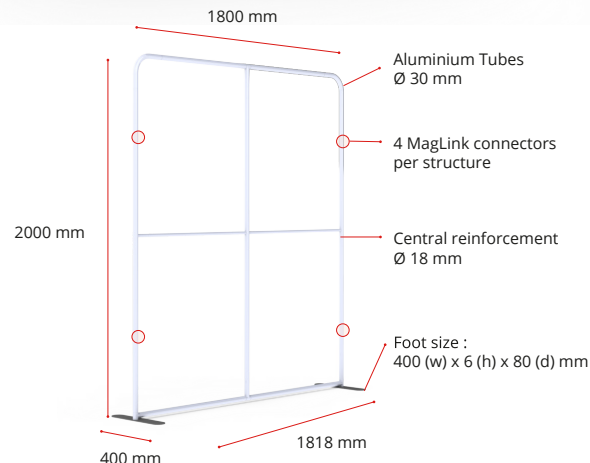
2 stabilising feet with Twist & Lock supplied with each frame



Double-sided tension fabric. Zip system



**Modulate™** carry bag with dedicated compartments for the feet and graphics



## Structure informations :

Item	Modulate Straight 1820
Code	MOD-S-1820
Structure dimensions	1818 (w) x 2000 (h) x 400 (d) mm
Graphic visual area	1800 (w) x 1982 (h) mm
Boxed dimensions	1000 (w) x 245 (h) x 125 (d) mm
Structure weight	7.80 kg
Boxed weight	8.18 kg

## OPTIONAL ELEMENTS :



Modulate half feet (pair)  
**MOD-HALF-FOOT-P**  
218 (w) x 6 (h) x 80 (d) mm



Extension Kit  
**MOD-EXT400MM**  
3 tubes



Spot LED Flood  
**LED-FLOOD-ARM-BDLK**

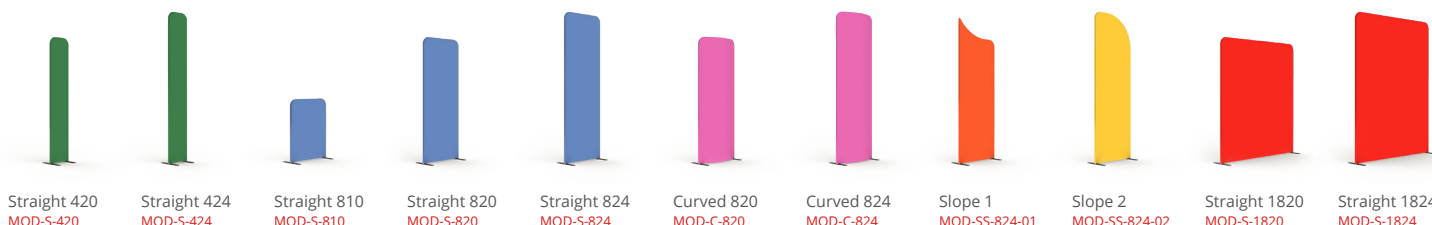


Spot LED Strip  
**LED-STRIP-ARM-BDLK**



Fixing for 30mm Ø tubing  
**US903**

## MIX & MATCH THE 11 MODULATE FRAMES :



Straight 420  
**MOD-S-420**

Straight 424  
**MOD-S-424**

Straight 810  
**MOD-S-810**

Straight 820  
**MOD-S-820**

Straight 824  
**MOD-S-824**

Curved 820  
**MOD-C-820**

Curved 824  
**MOD-C-824**

Slope 1  
**MOD-SS-824-01**

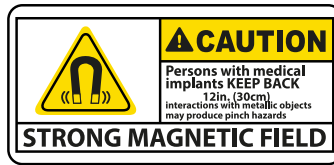
Slope 2  
**MOD-SS-824-02**

Straight 1820  
**MOD-S-1820**

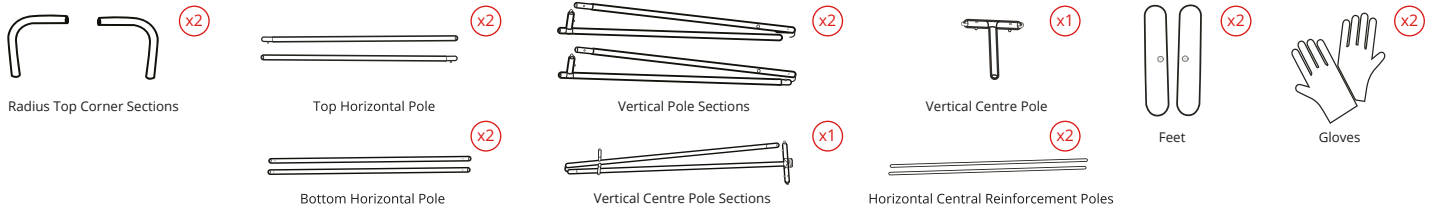
Straight 1824  
**MOD-S-1824**

# Modulate™ Straight 1820

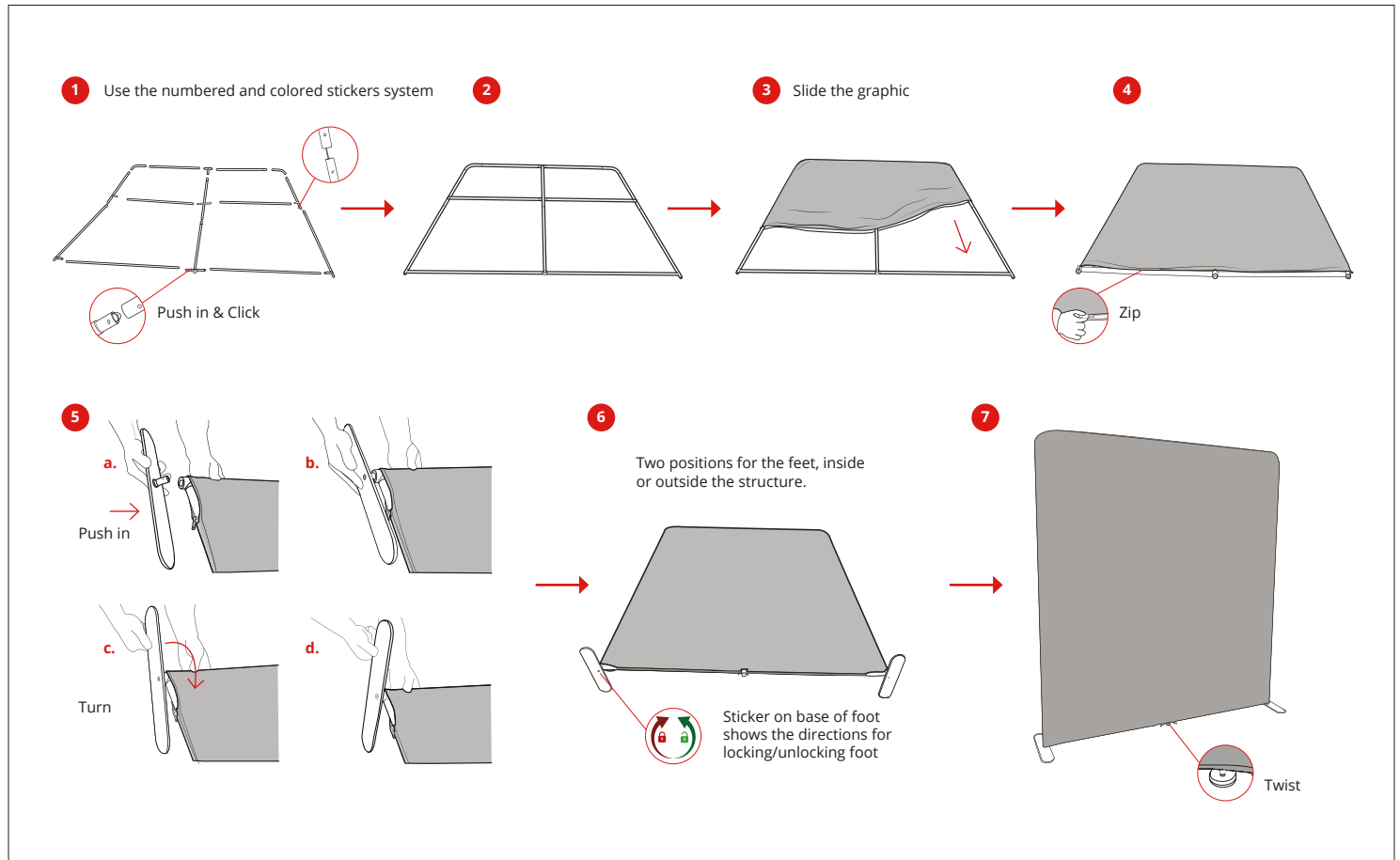
MOD-S-1820



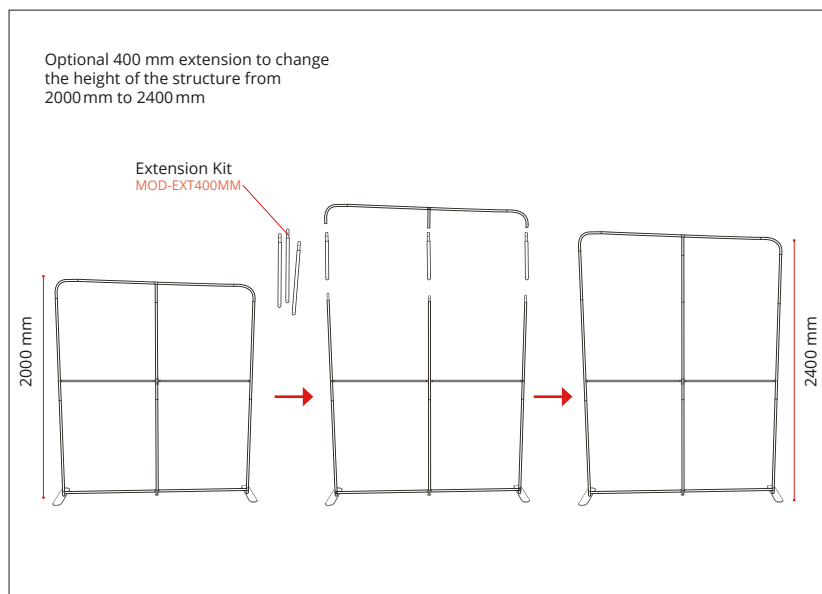
## ELEMENTS



## ASSEMBLY



## EXTENSION KIT (OPTIONAL) 2000 MM → 2400 MM



## CONNECTING MULTIPLE FRAMES

Remove one foot from second frame and align both frames on one foot

