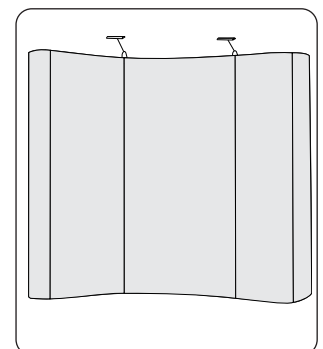
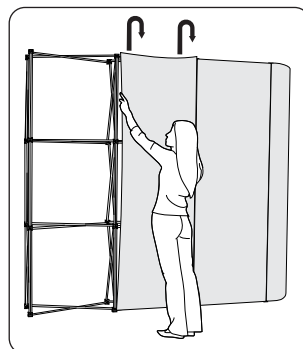
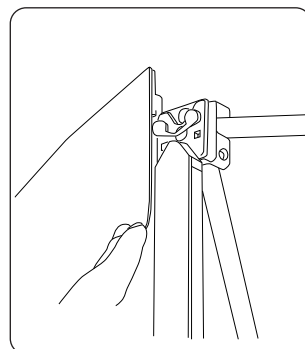
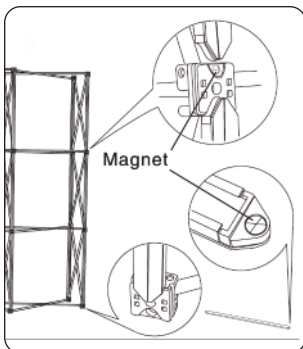
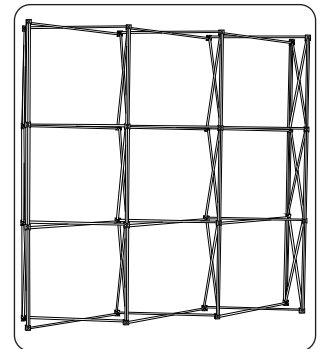
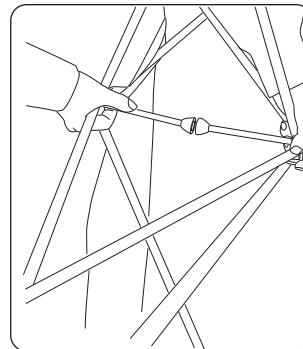
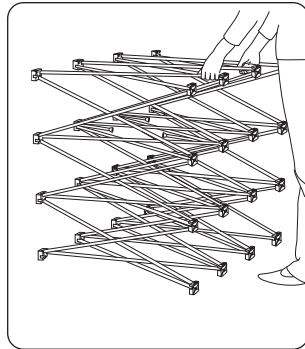
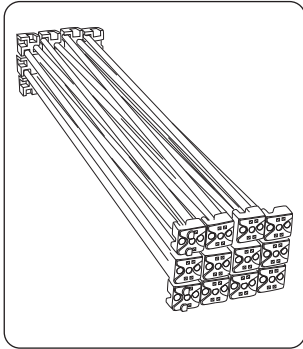


POP-UP ASSEMBLY INSTRUCTIONS



Pop-Up Sizes



Impact 3x1 Curved	⊗ 2225 (h) x 1240 (w) x 306 (d) mm
Impact 3x2 Curved	⊗ 2225 (h) x 1930 (w) x 485 (d) mm
Impact 3x3 Curved	⊗ 2225 (h) x 2540 (w) x 685 (d) mm
Impact 3x4 Curved	⊗ 2225 (h) x 3070 (w) x 960 (d) mm
Impact 3x5 Curved	⊗ 2225 (h) x 3430 (w) x 1225 (d) mm
Impact 3x1 Straight	⊗ 2225 (h) x 1240 (w) x 306 (d) mm
Impact 3x2 Straight	⊗ 2225 (h) x 1970 (w) x 306 (d) mm
Impact 3x3 Straight	⊗ 2225 (h) x 2700 (w) x 306 (d) mm
Impact 3x4 Straight	⊗ 2225 (h) x 3435 (w) x 306 (d) mm
Impact 3x5 Straight	⊗ 2225 (h) x 4160 (w) x 306 (d) mm

This user instruction is for the 3 x 3 S straight version. Other configurations will look different, however the principles will stay the same.

Dis-assembly Instructions

